



# Fire Update



## DELTA FIRE STATUS

Delta Fire Information: (530) 498-0953

Email: [deltafireshf@gmail.com](mailto:deltafireshf@gmail.com)

InciWeb: [inciweb.nwccg.gov/incident/6191/](http://inciweb.nwccg.gov/incident/6191/)

Shasta-Trinity National Forest

Facebook: [www.facebook.com/shastatrinitynf](http://www.facebook.com/shastatrinitynf)

Twitter: [@shastatrinitynf](https://twitter.com/shastatrinitynf)

Delta Fire Summary:		Resources Assigned:	
Acres Burned:	15,294	Total Personnel:	Not Available
Containment:	0 percent	Hand Crews:	Not Available
Expected Containment:	Not Available	Engines:	Not Available
Cause:	Human	Bulldozers:	Not Available
		Helicopters:	Not Available

### Current Situation:

California Interagency Incident Management Team 5 assumed command of the Delta Fire Wednesday afternoon and will continue to manage this fire in addition to the Hirz Fire.

The Delta Fire continued to grow aggressively throughout the evening and overnight with a large flaming front and flame lengths estimated at 300 feet high. The fire has grown primarily to the north and northwest of Vollmers, burning on both sides of Interstate 5. Life safety is a top priority for firefighters, and the Shasta County Sheriff's Office is coordinating evacuations for areas affected by the incident. Crews have worked to anchor the south end of the fire along Dog Creek. To stop the fire's northern spread and protect structures east of Interstate 5, firefighters have started a backfiring operation off a road that runs east from Pollard Flats to Hirz Fire's western side near Salt Creek Road. Many of the eastern Hirz Fire contingency lines may be used in the efforts to control the Delta Fire.

Weather will continue to be hot and dry with gusty winds that have the possibility to increase fire behavior. Firefighters are working quickly to protect communities and structures immediately threatened by the fire. Dozers are being mobilized to construct fuel breaks and control lines north of the fire front to assist with protecting life and property. Aircraft will be used extensively for water and retardant drops in order to assist with protecting values at risk and slowing the fire's progression.

### Road Closures:

Northbound Interstate 5 is closed at the Fawndale exit approximately 10 miles north of Redding. Southbound Interstate 5 is closed 3.6 miles south of Mt. Shasta at Mott Rd. Motorists are advised to use an alternate route and avoid the area.

### Shasta County Evacuations:

Numerous structures are threatened, and the Shasta County Sheriff's Office has issued mandatory evacuations for residents along the Interstate 5 corridor from exit 707 at Vollmers north to exit 714 at Gibson.. Follow the Shasta County Sheriff's Facebook page: [www.facebook.com/Shasta-County-Sheriffs-Office-1527637610823075/](http://www.facebook.com/Shasta-County-Sheriffs-Office-1527637610823075/)

### Siskiyou County Evacuations:

The Siskiyou County Sheriff's Office has issued an evacuation warning for all residents of Dunsmuir. Call the 24-Hour Dispatch Center at (530) 841-2900 or the Dunsmuir Substation at (530) 235-2320 or 235-2232 with questions. Follow the Siskiyou County Sheriff's Office Facebook page: [www.facebook.com/SiskiyouCountySheriff](http://www.facebook.com/SiskiyouCountySheriff).

### Evacuation Shelter:

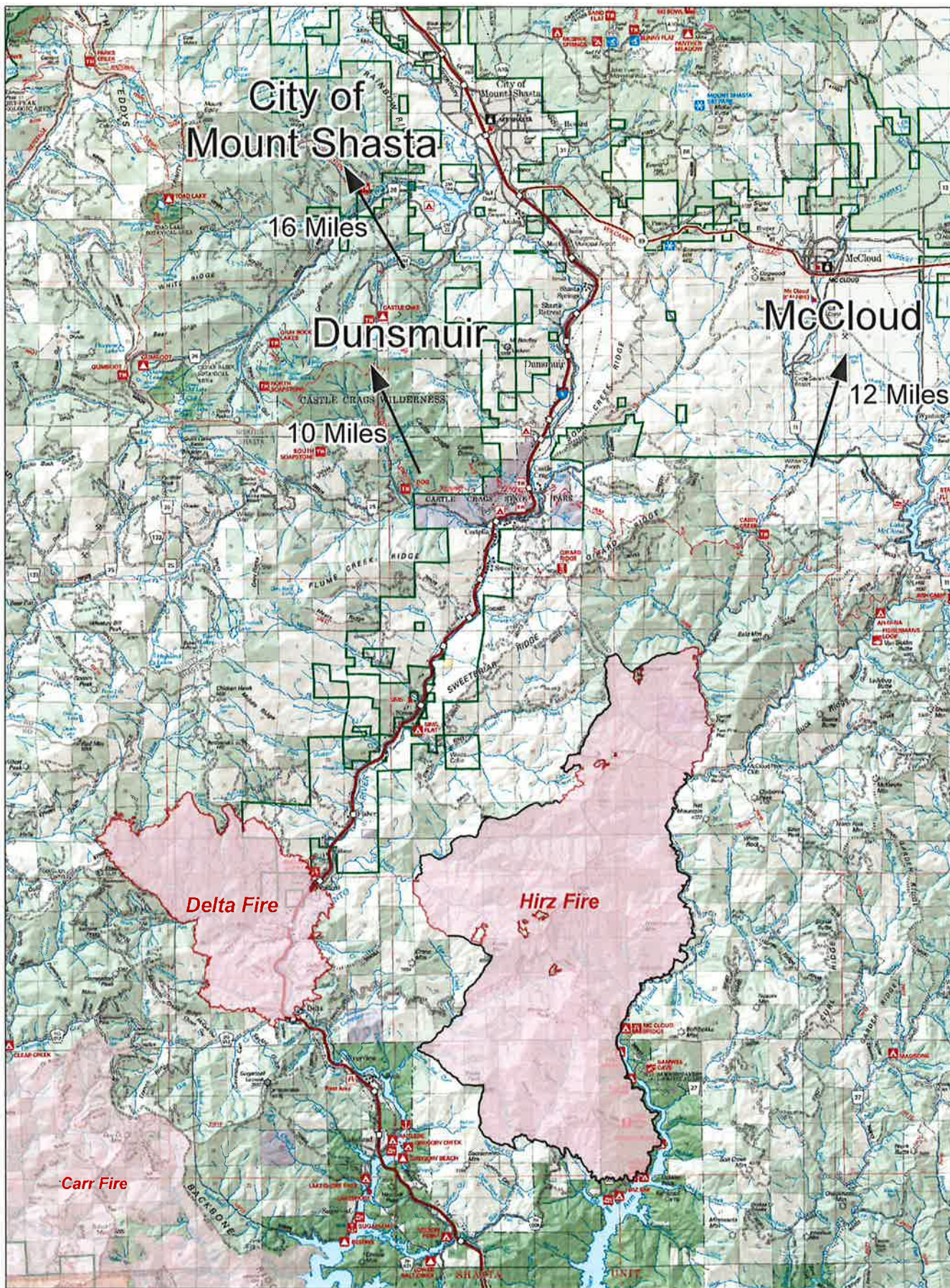
An evacuation shelter has been established at Mount Shasta Community Center, 629 Alder Street, Mount Shasta.

### Small Animal Shelter:

The Mount Shasta Humane Society is accepting small animals for evacuees using the evacuation shelter. The humane society is at 1208 North Mount Shasta Blvd (530-926-4052).

###





### Hirz Fire

CA-SHF-1223  
 September 6, 2018  
 Hirz 46,150 acres  
 Delta 15,294 acres

**Public Information**

- Completed Line
- Wildfire Daily Fire Perimeter

